

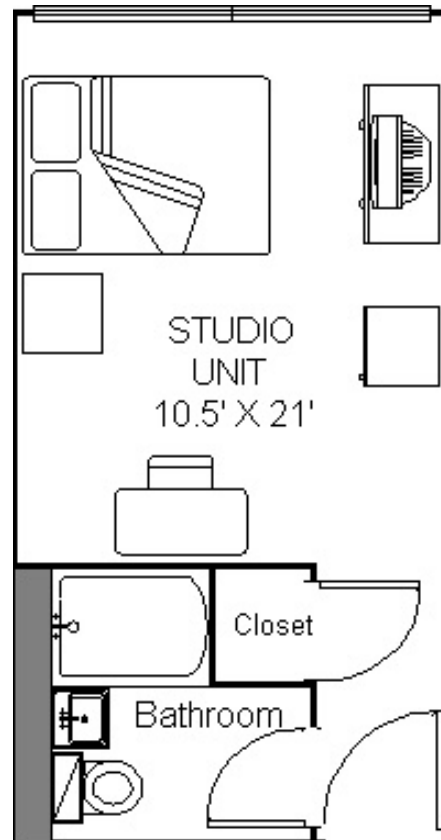
## **L**incoln Hall

**1821 East-West Road**  
**Telephone: 808-944-7816**  
**Desk Hours: 7:30 a.m. - 9:30 p.m.**

Lincoln Hall is offering a limited number of private studios with one double bed for Pacific Circle Consortium Conference participants at \$49/night. Reservations are available from Saturday, June 23, 2007 to Saturday, June 30, 2007. Reservations will be taken on a first come, first serve basis. Please have your credit card information available when you call in case of cancellation charges. A deposit is not required. However, a cancellation charge will be assessed based on the following advanced notification schedule:

- Before April 24, no charge
- April 24 - May 24, one night's rent per room
- After May 24, two nights rent

Lincoln Hall is a four-story building located next to the Hawaii Imin International Conference Center. It is serviced by one elevator. Lincoln Hall houses visiting scholars and short-term conference participants. All apartments have cable TV, telephone service, internet access and private bathroom/toilet facilities. Please note that rooms are not air conditioned and hotel-type services such as porters and room service are not available.



Each residence hall has a reception desk to provide check-in and check-out services. Lincoln Hall desk hours are 7:30am – 9:30pm. After-hour arrivals and departures are processed at Hale Manoa desk which is open 24 hours a day, 7 days a week. The desks also take messages, provide change for laundry and vending machines, issue spare keys, and provide general information.

Check in time is 2:00 pm. Check our time is 10:00 am.

To make reservations, contact:  
 Miss Truc Nguyen  
 Conference Coordinator  
 Toll free 1.800.799.8111 (U.S and Canada)  
 Direct 1.808.956.6507  
 email: [pcc2007@hawaii.edu](mailto:pcc2007@hawaii.edu)

Please have the following available when contacting us:

- Name(s) of individuals
- Credit Card information for cancellation purposes
  - o Type of card, Name on card, number, exp date
- Dates of arrival and departure